

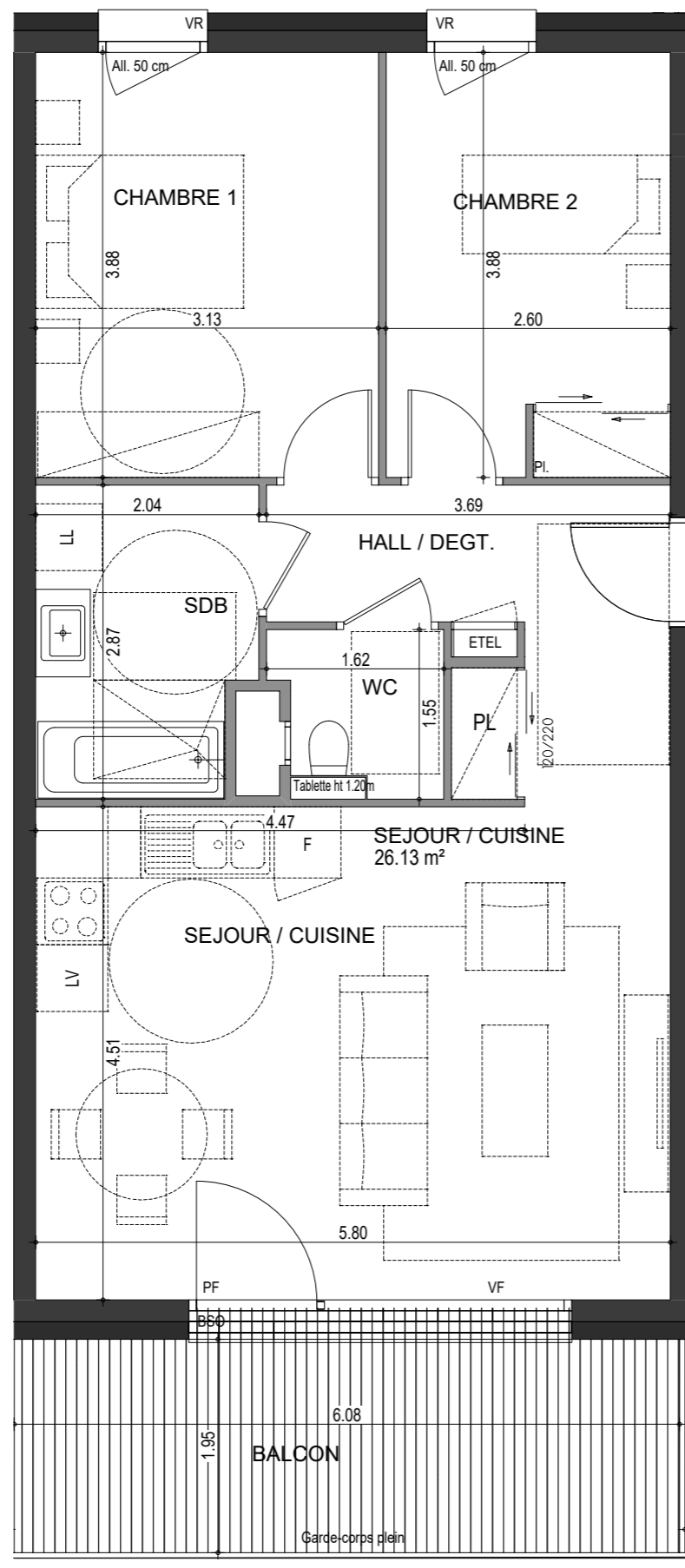
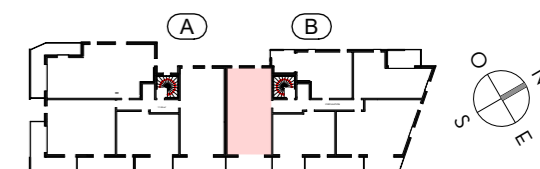
# L'ÉVEIL

*Vivre dans un parc, habiter la ville*

## OSTARA

**PLAN DE  
PRE-COMMERCIALISATION**

RUE DES CARILLONS  
74940 ANNECY



**B45**

**3 PIECES  
HALL B - B45 - R+4**

HALL / DEGT.	7.66 m <sup>2</sup>
SEJOUR / CUISINE	26.13 m <sup>2</sup>
CHAMBRE 1	12.17 m <sup>2</sup>
CHAMBRE 2	10.04 m <sup>2</sup>
SDB	5.52 m <sup>2</sup>
WC	2.12 m <sup>2</sup>
<b>SURFACE TOTALE HABITABLE</b>	<b>63.64 m<sup>2</sup></b>
BALCON	11.86 m <sup>2</sup>
<b>SURFACE TOTALE PRIVATIVE</b>	<b>75.50 m<sup>2</sup></b>