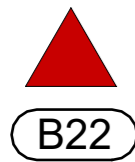
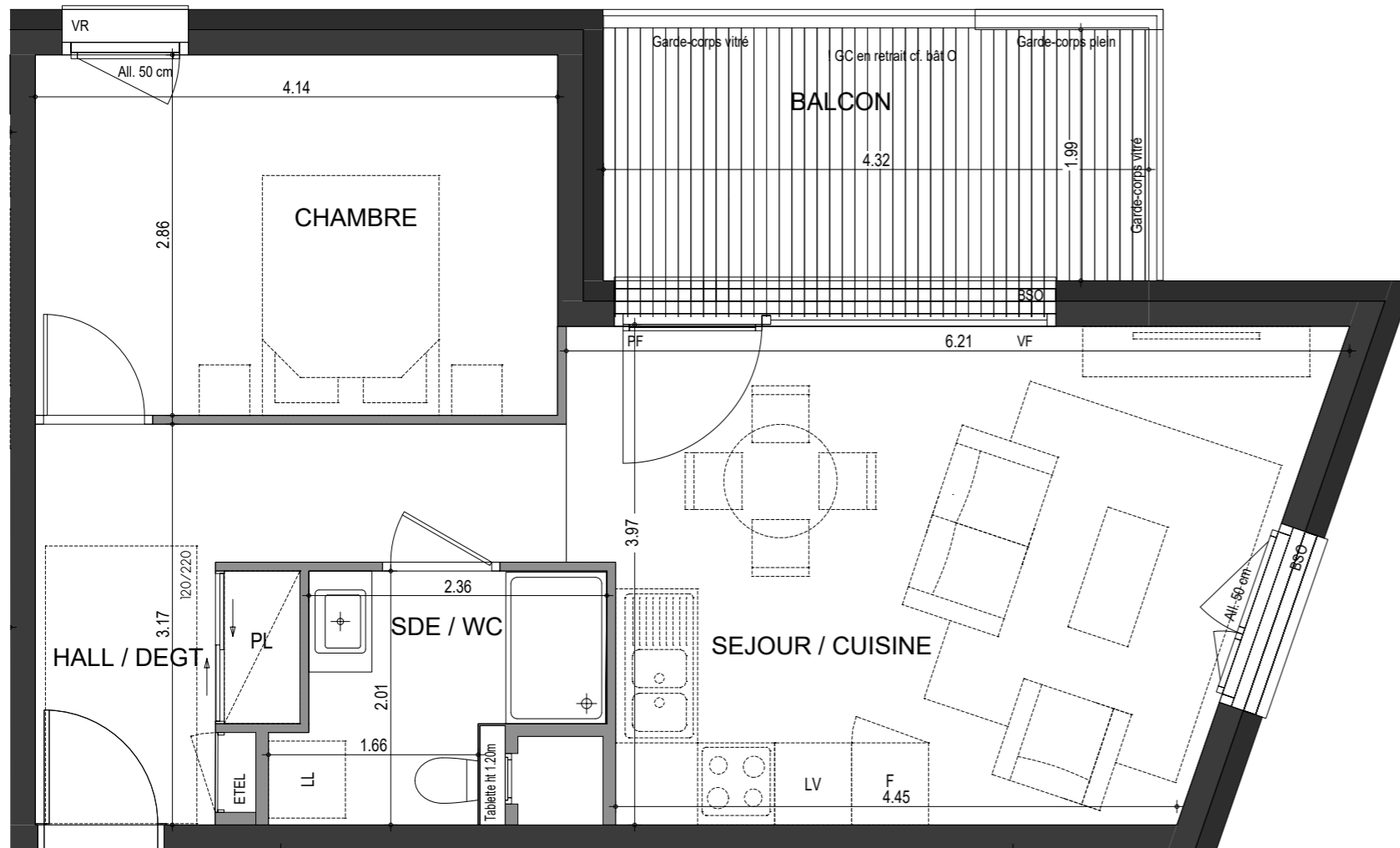
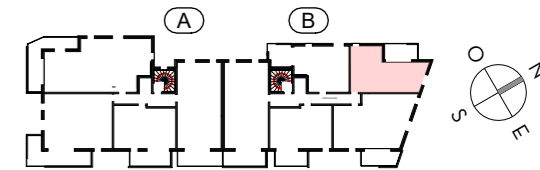


OSTARA

PLAN DE PRE-COMMERCIALISATION

RUE DES CARILLONS
74940 ANNECY



2 PIECES HALL B - B22 - R+2

HALL / DEGT.	8.30 m ²
SEJOUR / CUISINE	21.00 m ²
CHAMBRE	11.82 m ²
SDE / WC	4.32 m ²

SURFACE TOTALE HABITABLE	45.44 m²
BALCON	8.64 m ²
SURFACE TOTALE PRIVATIVE	54.08 m²